

POWERPAD MODELS

Printer 10 (+Compact) Mini-Dater S 120 Mini-Folio S 126 Mini-Info S 120/W Mini-Dater S 160	E/10	Printer S 200 Printer S 260 Printer S 220 Printer S 220/W Printer S 226 Printer S 226/P	E/200
Mini-Print S 110 Mini-Folio S 120/13 Mini-Info S 120/WD Mini-Dater S 120/DD Mini-Dater S 120/P Mini-Dater S 160/DD	E/12	Expert R3040 (+Dater)	E/R 2040
Printer 15	E/15	Classic 2100 Classic 2100/3 Classic 2100/4 Classic 2100/W Classic 2106 Classic 2106/P Classic 2160 Expert 3100 Expert 3160	E/2100
Printer 20 (+Compact)	E/20		
Printer 25	E/25		
Printer 30 (+Compact)	E/30	Classic 2300 Classic 2360 Classic 2006 Expert 3300 Expert 3360 Office S 300 Office S 360	E/2300
Printer 35	E/35		
Printer 38 (+Dater)	E/38		
Printer 40 (+Compact)	E/40		
Printer 45	E/45	Expert 3400	E/3400
Printer 50 (+Compact)	E/50/1	Classic 2400 Classic 2460 Classic 2008 Classic 2010 Classic 2000/P Classic 2000/WD Classic 2600 Classic 2660 Classic 2008/P Classic 2010/P Expert 3600 Expert 3660 Office S 400 Office S 600 Office S 608 Office S 608/P Office S 610 Office S 610/P Office S 660	E/2600
Printer 52 (+Dater)	E/52		
Printer 53 (+Dater)	E/53		
Printer 54 (+Dater)	E/54		
Printer 55 (+Dater)	E/55		
Printer 60 (+Dater) Printer 60 Compact	E/60		
Printer Oval 44	E/Oval 44		
Printer Oval 55 (+Dater)	E/Oval 55		
Printer R 12	E/R 12		
Printer R 17 (+Dater)	E/R 17		
Printer R 24 (+Dater)	E/R 24		
Printer R 30 (+Dater)	E/R 30		
Printer R 40 (+Dater)	E/R 40		
Printer R 45 (+Dater) Classic R 2045 Classic R 2045 6 Classic R 2045 UZ „Hour“	E/R 45	Classic 2800 Classic 2860 Expert 3800 Expert 3860	E/2800
Printer R 50 (+Dater)	E/R 50	Expert 3900 Expert 3960 Expert 3960 S3/S4 Expert Double Date	E/3900
Printer Q 12	E/Q 12	Pocket Stamp 20	E/Pocket Stamp 20
Printer Q 17	E/Q 17	Pocket Stamp 30 Pocket Stamp Oval 30	E/Pocket Stamp 30
Printer Q 24 (+Dater)	E/Q 24	Pocket Stamp Q 25 Pocket Stamp R 25	E/Pocket Stamp 25
Printer Q 30 (+Dater)	E/Q 30	Pocket Stamp R 30	E/Pocket Stamp R 30
Printer Q 43 (+Dater)	E/Q 43	Pocket Stamp R 40	E/Pocket Stamp R 40
Printer T 45 (+Dater)	E/T 45	Mini Pocket Stamp	E/Mini Pocket

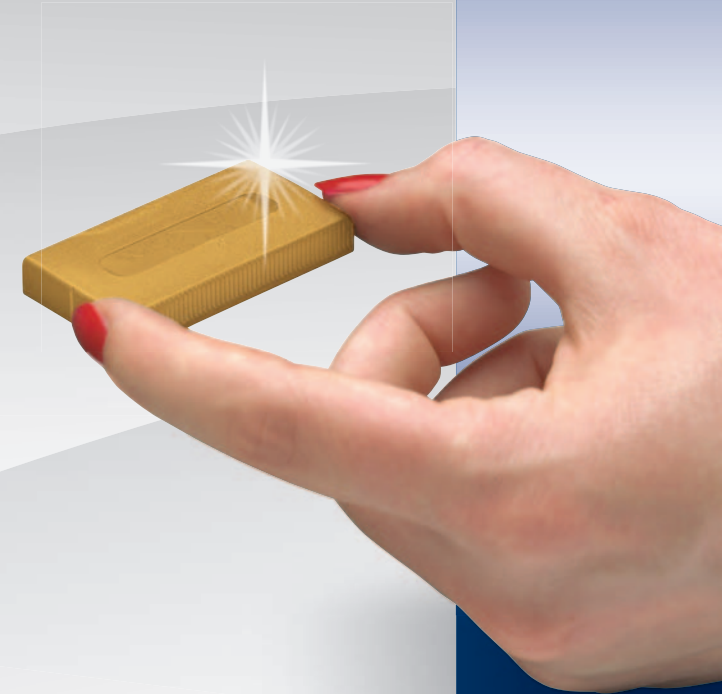
BI-COLOURED INK PADS

Bi-coloured ink pads		Bi-coloured ink pads	
Printer S 260 Printer S 260/L Printer S 260/RL Printer S 226/P	E/200/2	Classic 2860 Expert 3860	E/2800/2
Printer R 30	E/R 30/2	Expert 3960	E/3900/2
Printer R 40	E/R 40/2	Printer R 45-Dater Classic R 2045 6 Classic R 2045 UZ „Hour“	E/R 45/2
Printer R 40-Dater	E/R 40/1 Dater/2		
Printer Q 43-Dater	E/Q 43/2		
Printer R 50	E/R 50/2		
Printer R 50-Dater	E/R 50 Dater/2		
Printer 35-Dater	E/35/2		
Printer 38-Dater	E/38/2		
Printer 53-Dater	E/53/2		
Printer 54-Dater	E/54/2		
Printer 55-Dater	E/55/2		
Expert R3040-Dater	E/R 2040/2		
Classic 2160 Classic 2160/RL Classic 2106/P Expert 3160	E/2100/2		
Classic 2360 Classic 2006/P Expert 3360 Office S 360 Office S 360/RL	E/2300/2		
Classic 2460 Classic 2660 Expert 3660 Office S 660	E/2600/2		

PAUL'S BOOK SHOP
4110 100-0000 Avenue
10000 100-0000 Avenue
10000 100-0000 Avenue
10000 100-0000 Avenue
10000 100-0000 Avenue



POWER PADS



COLOP
self-inking stamps

www.colop.com

English 125480

COLOP **POWERPADS**

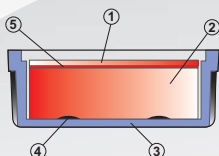
clean & practical!

Impressive imprints only with the ORIGINAL COLOP SPARE PADS

For special ink spare pads with an uninked felt material are available

New text plate → new spare pad

Guaranteed repeat business



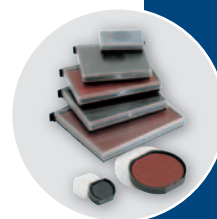
1. Surface layer (colour spread)

2. Pad material (foam)

3. Pad holder

4. Glue

5. Glue (fleece)



Constant
COLOP
quality for
your spare
pads



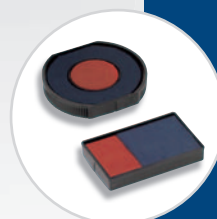
Clean and
simple
exchange of
spare pad



Avoid text
die damages
because of
unsuitable
ink by using
COLOP pads



Available in
5 different
colours



Also
available:
2-coloured
imprints in
red and blue

QUESTIONS & ANSWERS

Why better exchange the spare pad instead of reinking it?

Do not re-ink the spare pad of your COLOP self-inker. When using unsuitable ink, the pad and/or the die plate can be destroyed. Customary ink should only be used for traditional stamp pads. Original COLOP spare pads for self-inking stamps are electronically inked and therefore guarantee that the ink is evenly spread in the spare pad. Reinking the spare pad leads to a high quantity of ink on the surface layer of the pad (bad imprint), because the ink can not sufficiently seep into the pad material. This way you automatically lose also the guarantee for your imprint.

How to exchange the pad?

Please exchange the present spare pad in your self-inker by simply inserting a new one. This way dirty fingers or working surfaces are an issue of the past.

What to do with the old pad?

All parts of COLOP self-inking stamps are harmless and can be disposed of the normal household waste.

In which colours COLOP spare pads are available?

COLOP spare pads are available in 5 different colours (black, red, blue, green, violet), and they are available at qualified dealers. For quite a number of models, COLOP also offers two-coloured (red/blue) pads.

How do you change the colour of the imprint?

First please remove the pad from the stamping device. After that clean the text die in order to avoid old ink pigments getting into the new spare pad. Mostly it is sufficient to stamp on a white sheet of paper without the inserted pad till there won't appear an imprint anymore. Now insert the new pad with the other colour into the stamp.

What has to be considered when buying a new text plate?

When buying a new text plate, you should also ask for a new spare pad, because the present text plate „left its traces“ on the spare pad. This means that the pad surface is a bit uneven, and therefore you would achieve only a partial imprint with your new text plate. The best however would be to use a new stamping device for the new text plate, and this way you can ask for the latest model.

What do you use the endorsing ink for?

This ink is meant to be used for the traditional stamp pads ONLY, it is not suitable for spare pads of self-inking stamps. In some cases even your text plate and the spare pad can be destroyed (for instance because of solvents which are component of the ink).